

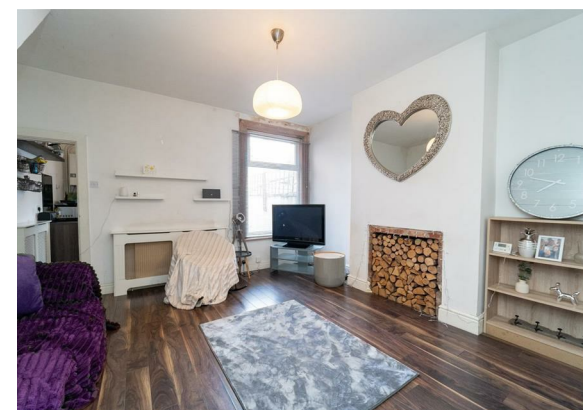
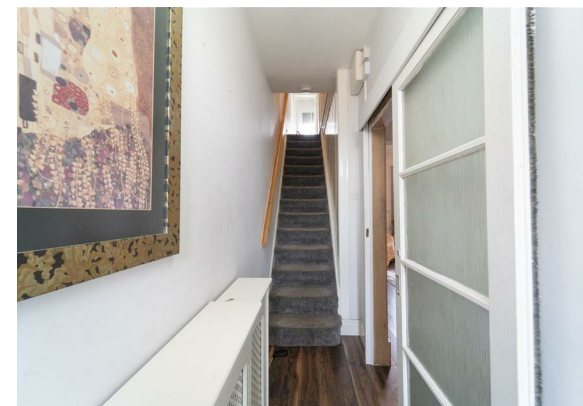
55 Lloyd Street South, Fallowfield, Manchester, M14 7LF



Offers In The Region Of £240,000


 3  1  2  E

VIDEO TOUR AVAILABE A delightful and well-presented THREE BEDROOM, period mid-terrace property. Located on a quiet residential road here in Fallowfield. Situated a short drive from Manchester city centre, with good transport links on Princess parkway, close to Alexandra Park with a selection of sports activities, Hough End leisure centre in the direction of West Didsbury and Divine Mercy Primary School nearby. In brief the well-planned property consists of an entrance hall, family room with a bay window to the front aspect, a good-sized lounge/dining room and a fitted kitchen, which allows access out into the rear enclosed courtyard style garden. To the first floor the landing reveals a double bedroom with a bay window to the front aspect, a second bedroom with stairs leading up to a Mezzanine, a further bedroom to the rear and a three-piece family bathroom completes this home. The property benefits from gas fired central heating, a rear enclosed courtyard style garden and period features such as cast iron fireplaces.





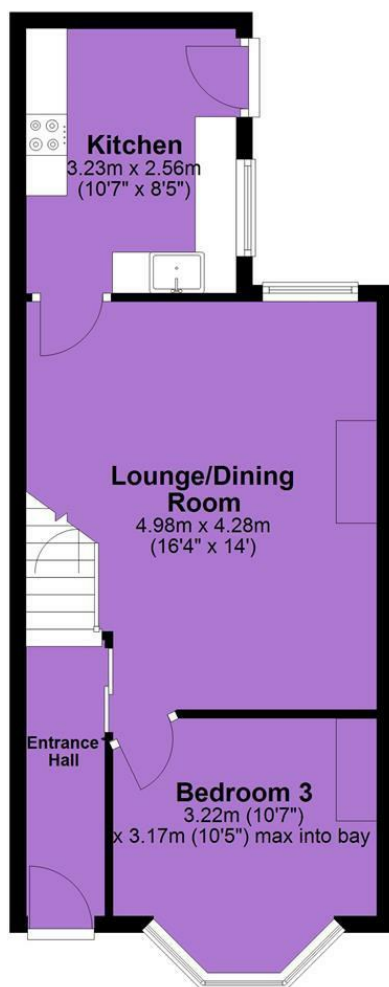
EPC Chart

Energy Efficiency Rating		
	Current	Potential
Very energy efficient - lower running costs		
(92 plus) A		
(81-91) B		79
(69-80) C		
(55-68) D	54	
(39-54) E		
(21-38) F		
(1-20) G		
Not energy efficient - higher running costs		
England & Wales	EU Directive 2002/91/EC 	

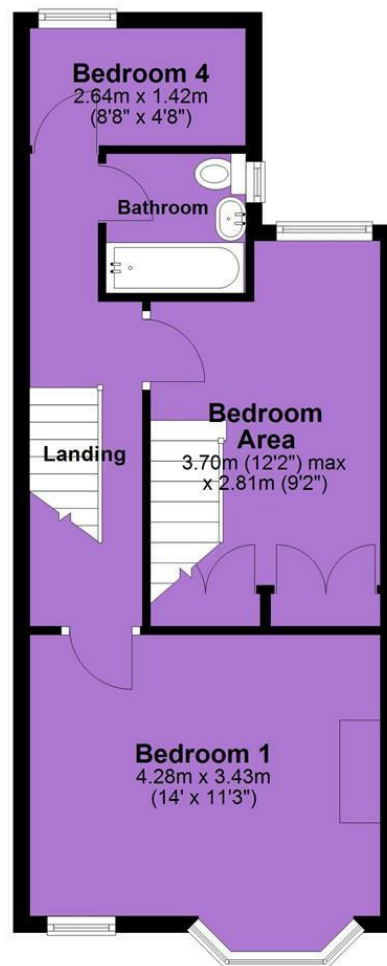


Tenure: **Freehold** Council Tax Band: **A**

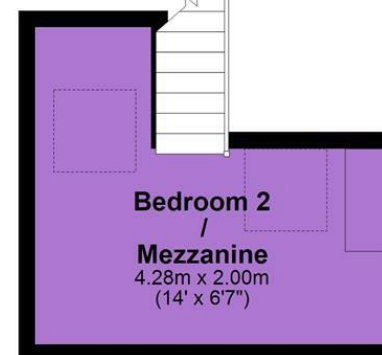
Ground Floor



First Floor



Second Floor



JP & Brimelow Estate Agents Ltd
430 Barlow Moor Road, Manchester, M21 8AD
Tel: 0161 8822233

E: sales@jpbrimelow.co.uk www.jpandbrimelow.co.uk



JP & Brimelow
ESTATE AGENTS

NOTICE: JP & Brimelow Estate Agents Ltd for themselves and for the vendors or lessors of this property whose agents they are give notice that:

- (i) the particulars are set out as a general outline only for the guidance of intending purchasers or lessees, and do not constitute, nor constitute part of, an offer or contract;
- (ii) all descriptions, dimensions, references to the condition and necessary permissions for use and occupation, and other details are given in good faith and are believed to be correct but any intending purchasers or tenants should not rely on them as statements or representations of fact but must satisfy themselves by inspection or otherwise as to the correctness of each of them;
- (iii) no person in the employment of JP & Brimelow Estate Agents Ltd has any authority to make or give any representation or warranty whatever in relation to this property.

jpandbrimelowestateagents

@jpandbrimelow